



**CYCLING  
GRAND PRIX**  
JULY 16, 2023

Presented by

**MNP**



# **2023 BC Criterium Championships**

**Updated July 14, 2023**

Part of the Global Relay Canada Cup Series

<https://www.victoriabikerace.com>

**Organizer:** Panache Cycling Sports, 250-415-3246, info@panachecyclingsports.com

**Location:** BC Legislature, 501 Belleville St., Victoria, BC V8V 2L8

**Course Description:** Our Championship course features a technical four corner circuit with a slight climb after corner 1, a long straightaway after corner 2, tight 65 degree on corner 3, and a fast downhill finish before the final turn on corner 4. The entire course is closed to traffic and will be spectator friendly on all sides.

## **Commissaire Panel**

PCP – Bruce Tonkin

Members –

John Errington

Isaac Leblanc

Gary Leung

Bruce Falk

Commissaire in training – Amy Errington

**Course GPS map:** <https://ridewithgps.com/routes/29869518>

Plenty of public parking at the parking lot of Menzies and Superior. Do not park on residential roads or at hotel parking lots.

Category 12 Beer Garden will be located on the Northwest side of the race course on Belleville and Menzies St.

## **REGISTRATION**

- Online registration closes July 13 at 11pm
- No day-of registration for championship categories.
- Day-of registration for non-championship categories available for \$70 cash.
- GST and service charges will be added at checkout

**Registration:** <https://ccnbikes.com/#!/events/the-agency-grand-prix-presented-by-mnp>

**Free Parking:** <https://goo.gl/maps/cGARfwFr7QVxxQTs9>

## **CATEGORIES AND LICENSES**

We welcome everyone to the BC Championships. There will be race categories and distances for all abilities. Age based categories are determined by the age as of December 31, 2023. The championship categories will be Elite Men/Women, Masters Men/Women, and Junior Boys/Girls (U19 & U17) and will be recognized from Cycling BC. All other categories are non-Championship categories.

All racers must hold a race license. Championship categories must hold a 'UCI' or 'Provincial Race' license. The License must be presented at sign on and whenever requested by a race official. International and out of province licenses are accepted.

International riders are required to fill out an additional waiver See link below.

<https://ccnbikes.com/#!/memberships/cycling-bc-2023-single-event-license>

Upgrade points are available per Cycling BC Upgrade Criteria.

- Elites must be 23 and over as of December 31, 2023
- U23 includes ages 19, 20, 21, 22 as of December 31, 2023
- Master racers must hold a Master license with corresponding age.

**Start Times and Distances:** Distance and Start Times subject to change. Race distances may be shortened in inclement weather. Categories may be further combined or separated depending on registration numbers.

### Race Day Sign In

- Sign in package pick opens at 6:30am at Cycling BC Race Tent at Start / Finish
- Racers must show race license and sign in.
- Sign in closes 30 minutes prior to start time.
- You will be issued a timing chip and 2 number bibs. The timing chips must be returned immediately after your race to the registration tent.

### RACE SCHEDULE AND PRICING

Start	Category	Online Price	Onsite Price	Race Time
8:00 AM	Women Masters 35+ (CHAMPIONSHIP) Women Cat 4 (Non Championship)	\$65	\$85	30 min + 5 Laps
9:00 AM	Men Cat 4 (Non Championship)	\$70	\$90	30 min + 5 Laps
10:00 AM	Men Masters A & B Men 35-44 & 45-54 (CHAMPIONSHIP) / Men Cat 3 (Non Championship)	\$70	\$90	40 min + 5 Laps
11:00 AM	Hop On Fun For Kids & Youth Racing (Cycling BC)	FREE	FREE	
11:00 AM	Youth Boys / Girls B Race (U13 / Beginner U15 / Beginner U17 / Beginner U19)	\$20	-	15 min + 5 Laps
11:30 AM	Youth Boys / Girls A Race (Advanced U15 / Beginner U17 / Beginner U19)	\$20	-	20 min + 5 Laps
12:15 PM	Men Masters C & D 55-64 & 65+ (CHAMPIONSHIP)	\$70	\$90	30 min + 5 Laps
1:15 PM	Junior Boys U19 / U17 (CHAMPIONSHIP)	\$65	\$85	30 min + 5 Laps
2:15 PM	OPEN WOMEN / U23 - (CHAMPIONSHIP) - Category 1-3	\$70	\$90	40 min + 5 Laps
3:30 PM	OPEN MEN / U23- (CHAMPIONSHIP) - Category 1-3	\$70	\$90	50 min + 5 Laps

## **Race information:**

### **GENERAL REGULATIONS**

1. All Events will run in accordance with the Rules and Regulations of the CAA/UCI. The CCA/UCI scale of penalties shall apply.
2. All bikes must be road style drop bar bikes and conform to UCI bike rules. Bikes cannot have fenders, racks, mirrors, or other accessories that may pose a safety risk to the race. An exception can be made to the youth category which will allow any type of bike. No E- bikes allowed in any category.
3. All racers and support staff must be responsible for conforming to the rules governing the race. All participants should familiarize themselves with the established rules prior to the competition.
4. Helmets are to be worn anytime you are on a bike.
5. Cycling BC and UCI's anti-doping regulations will be in effect.
6. All participants should abide by the code of conduct established by our governing body: <https://cyclingbc.net/wp-content/uploads/2014/11/Rider-Code-of-Conduct.pdf>
7. Any racers riding for a team other than their own club or team must obtain the necessary waivers. There will be no exceptions.
8. Junior Riders wishing to compete in the Elite Championship must present, at registration, a written upgrade letter from their Provincial Cycling Association.
9. An approved hard shell helmet shall be worn before and during all races.
10. Riders must sign-on for each event, 15 minutes prior to their start time.
11. Riders must produce their license at registration.
12. Race numbers must be worn. Refer to below diagram on last page for details.
13. It will be required that all racers pin their numbers on properly so that the numbers will be readily identifiable at the finish line. Numbers may not be folded, defaced or altered in any way. Should a number be lost, please report to the Chief Judge prior to the start of the race for a replacement. It is suggested by medical personnel that pertinent medical information be written on the back of one of your race numbers (e.g. name, age, medical issues & emergency contact number).
14. Any rider(s) that are lapped or in danger of being lapped by the lead group shall, at the Chief Commissaire's discretion, be eliminated from that race. Further details will be provided at the start of each event by the Chief Commissaire or starter.
15. All eliminated riders must withdraw from the race immediately upon being called out by the race official on the course. Failure to withdraw immediately will result in disciplinary action.
16. All riders must obey rules of the road: Riders must give way to Emergency Vehicles and if required to do so must neutralize the race on their own i.e. without instructions from an official.

### **CRITERIUM REGULATIONS**

1. Free lap rule in effect until last 5 laps. Free lap for recognized accidents only, namely punctures, breakage, and crashes certified by the Commissaire.
2. There will be primes throughout the event. A bell and an announcement will signify prime laps.
3. A bell will signify the last lap. The lapboard will show one lap to go.
4. If before the last 5 laps, two or more riders should lap the field, the field will sprint for final placing with 3 laps to go. The bell will sound at 4 laps for the group.
5. Lapped riders in the Criterium shall be eliminated upon being passed by the Lead Commissaire and must immediately leave the course.

## **Toilets, Parking and Team Zone**

- Free Parking is located on Indigo Parking Lot on corner of Menzies and Superior Street. Note that certain parking stalls are reserved 24/7 for clientele and are not to be used. Vehicles will be ticketed at owners expense.
- Portable toilets will be located at parking lot as well as corner of Belleville and Government Street.
- Team Tents can be set up in the parking area or along Menzies Street on the inside behind the fence.

## **Timing and Numbers**

- Electronic timing by Rebel Timing: <https://www.webscorer.com/Rebeltiming>
- You will receive a timing chip equipped with zap ties to your bike to be placed on seatpost. Photo finish will also be used to determine first wheel across the line.
- You will receive 2 identical race numbers to be pinned with 1 on bottom right rear pocket and 1 on top right shoulder rotated 90 degrees of your jersey. Numbers must not be cut, folded, or manipulated in anyway or riders risk relegation.

## **Mechanical Support**

- There will be no neutral wheels in the wheel pit area
- Riders are required to bring their own spare wheels to the wheel pit area and to identify them with a tag or paper indicating their race number or club/team name.
- Riders who have crashed and/or suffered a mechanical issue will be give 1 free lap after checking in to the Wheel Pit area and receiving the go-ahead from the race official. No free laps will be granted in the last 5 laps.
- Riders may only re-enter the race at the direction of the race official.

## **Results and Podiums**

- Unofficial results will be live online and available immediately. The official results will be verified by the Race Official. There will be a 15-minute time limit to protest the results. Podiums will proceed after this time.
- The top 3 riders of each category will be recognized on the podium.
- If a non-BC resident is top 3, in a BC Championship category, there will be 2 podiums presented for that category.
- The Championship categories will receive jersey and medals from Cycling

## **BC First Aid / Medical**

- Certified First Aid Attendants will be on site
- MEDIX EMS: Address: 2075 Henry Ave W #22, Sidney, BC V8L 1T2
- The closest hospitable is Royal Jubilee Hospital 1952 Bay St, Victoria, BC V8R 1J8

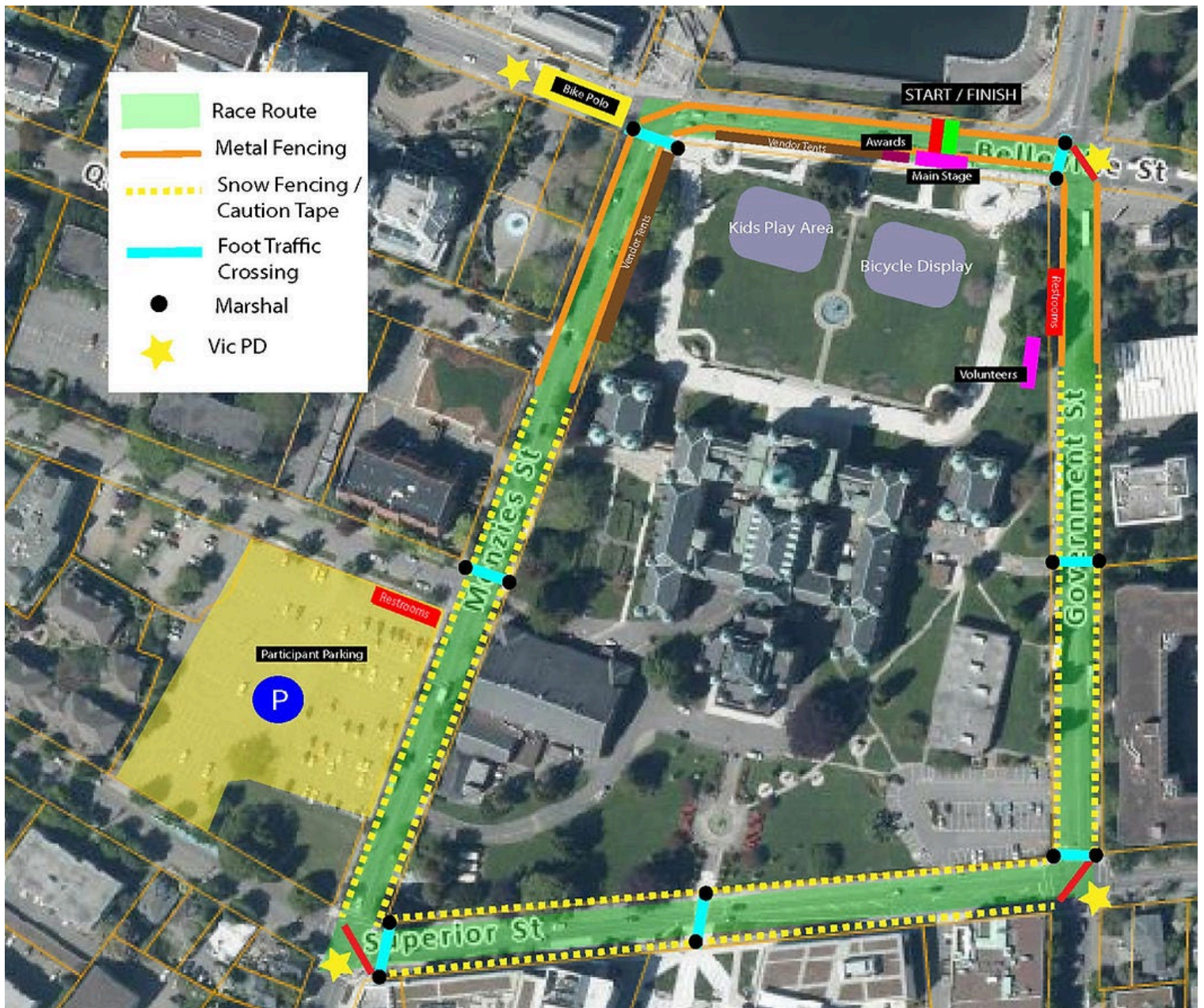
## **Accommodation**

- Hotel Grand Pacific - 463 Belleville St., Victoria, BC V8V 1X3 Phone: (250) 386-0450
- Fairmont Empress - Address: 721 Government St, Victoria, BC V8W 1W5 Phone: (250) 384-8111
- Embassy Inn Hotel - Address: 520 Menzies St, Victoria, BC V8V 2H4 Phone: (250) 382-8161
- Strathcona Hotel - Address: 919 Douglas St, Victoria, BC V8W 2C2 Phone: (250) 383-7137
- Accent Inns - Address: 3233 Maple St, Victoria, BC V8X 4Y9 Phone: (250) 475-7500
- Hotel Zed - Address: 3110 Douglas St, Victoria, BC V8Z 3K4 Phone: (250) 388-4345

## SPONSORS AND PARTNERS



## Map Overview



# RACE NUMBERS

- There will be 2 race numbers to be worn at each race, 1 frame number and hand-written numbers for identification for Wheel Service.
- Placement of the race numbers is as follows:
  - a) **2 Bib numbers: 1 on** Middle back as low and right as possible without sitting on number. The other number must be on the right shoulder rotated 9- degrees. Must be visible and not bent. Advise pinning to shorts.
  - b) **Bike Frame number:** Place on the inside of the frame behind the head tube. Zap ties or tape can be used. Do not cut the bike frame number.
  - c) **Race numbers must NOT be folded, altered or covered in any way.** They must be clearly visible at all times. Fines will be levied for numbers folded or not visible.

